

Ruth's Table



"Building Bridges: Breaking Barriers"

Part One

Artwork List

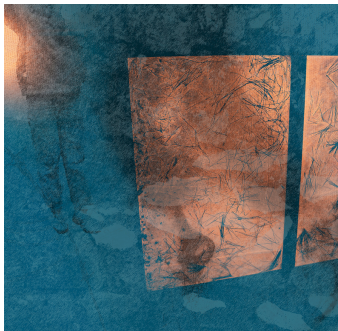


Beth Fein

Broken Painting Remains Unfinished, 1987

Ceramic mounted on canvas covered wood panel

24" x 22.5" x 2.5"



Beth Fein

Dreaming Blue, 2020

Print on Metal

24" x 24"



Beth Fein

Poet Dream, 2020

Print on Metal

24" x 24"



Joan Shulze

Cloud Riding, 1983

Silk, cotton, dyed, pieced, hand quilted

72" x 72"

Ruth's Table



"Building Bridges: Breaking Barriers"

Part One

Artwork List



Joan Shulze

Fata Montana #4, 2020

Cotton, personal photos, digital prints, pieced, machine quilted

42.25" x 41"



Howard Hersh

Roundabout Series, 2021

Acrylic on panel

48" x 48" x 2"



Howard Hersh

Roundabout Series, 2021

Acrylic on panel

48" x 48" x 2"



Howard Hersh

Straight Forward Curves, 2006

Encaustic on panel

60" x 30" x 2"

For all inquiries, contact
+1 415-621-1000 contact@ruthstable.org www.ruthstable.org
Ruth's Table is a program of Covia www.covia.org

Ruth's Table



"Building Bridges: Breaking Barriers"

Part One Artwork List



Keith Wilson

The Ascent of Architecture, 1985

Watercolor, gold leaf & india ink on RWS/Hayle Handmade paper
9" x 7.25"



Keith Wilson

Forest Houses Series.04, 2020

Oil on linen

20" x 16"

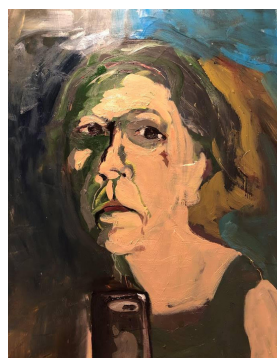


Corey Weiner

Estelle, 2018

Oil on Cradled Wood Board

40" x 30" x 1"



Corey Weiner

She Wants Something, But...

Oil Paint on Gesso Board

16" x 12" x 1/4"

For all inquiries, contact
+1 415-621-1000 contact@ruthstable.org www.ruthstable.org
Ruth's Table is a program of Covia www.covia.org

Ruth's Table



"Building Bridges: Breaking Barriers"

Part One Artwork List



Corey Weiner

Thinking Estelle, 2018
Oil Paint on Cradled Board
40" x 30" x 1"



Liz Mamorsky

Madrone, 1971
Acrylic on canvas
44" x 54"



Liz Mamorsky

Street Jazz Series, 2020
Photo metal prints: dye sublimation on aluminum
44" x 54"