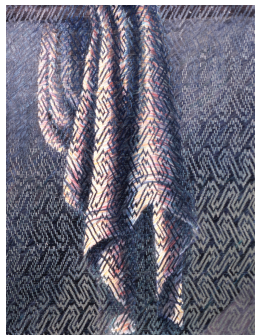


Ruth's Table



"Building Bridges: Breaking Barriers" Part Two | Artwork List

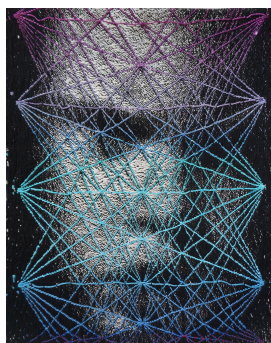


Lia Cook

Florentine Fresco, 1992

Linen, rayon, acrylic, paint and dyes.

61" x 44"

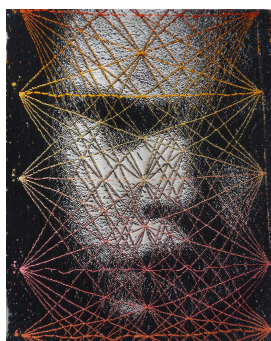


Lia Cook

Su Series Intensity Data Blue , 2013

Cotton, rayon, woven.

16" x 12"

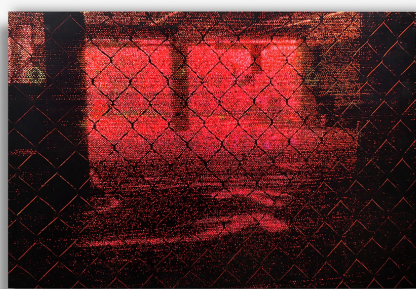


Lia Cook

Su Series Intensity Data, 2013

Woven cotton, rayon

16" x 12"



Elizabeth Sher

Smoke Screen: Caged, 2021

Arcival ink on aluminum.

20"x30"x3".

Ruth's Table

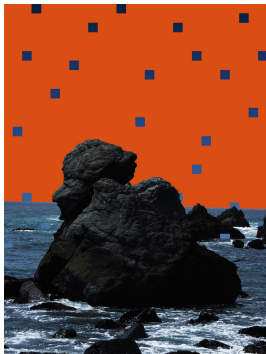


"Building Bridges: Breaking Barriers" Part Two | Artwork List



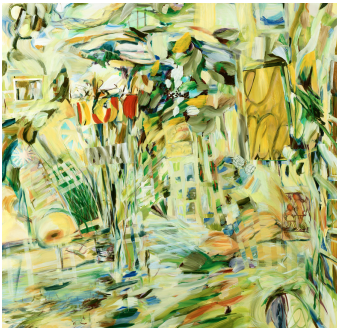
Elizabeth Sher

Crossing the Digital Divide #2, 2013
Archival ink on canvas with acrylic paint.
43"x28"x1.2"



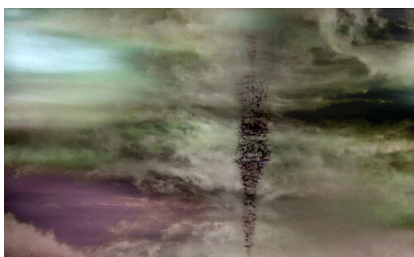
Elizabeth Sher

Crossing the Digital Divide #8, 2013
Archival ink on canvas with acrylic paint.
52"x421.5"



Naomie Kremer

From Memory, 2003
Oil on linen.
42" x 42"



Naomie Kremer

A Tomb for Anatole, 2020
Video
5 minute 13 seconds
With (French) poem by Stéphane Mallarmé read by Michel Pastore, music by Pierre Thilloy

Ruth's Table



"Building Bridges: Breaking Barriers" Part Two | Artwork List



Mary Curtis Ratcliff

Hong Kong: Wu Shu , 2003

24" x 30"

4/200



Mary Curtis Ratcliff

Scrapworks XIV: World Grid, 2020

22" x 15"



Francesca Pastine

ArtForum 41, Unsolicited Collaboration with Frank Stella , 2012

Artforum magazine, wood, screw, matte board, Plexiglas.

27 x 27 x 4.74"



Francesca Pastine

Artforum 39, Unsolicited Collaboration with Guy de Cointet, 2012

Artforum magazine, Plexiglass, screws, wood, paint.

41.5 x 11 x 18"

For all inquiries, contact

+1 415-621-1000 contact@ruthstable.org www.ruthstable.org

Ruth's Table is a program of Covia www.covia.org

Ruth's Table



"Building Bridges: Breaking Barriers" Part Two | Artwork List



Francesca Pastine

Artforum 40, Unsolicited Collaboration with Zoe Leonard, 2012
Artforum magazine, Plexiglass, screws, mirror, wood, paint.
34.5 x 24 x 10.5"



Francesca Pastine

Untitled 2, 2020
Watercolor, ink, spray paint, on paper.
39"x27"



Teddy Milder

Circling Duende , 2013
Archival pigment print on recycled metal cans; pieced and hand stitched with metallic thread; mounted on steel plate.
20 ½" x 27 ¾"



Teddy Milder

Wall Constructions Triptych , 2018
Archival pigment print on artist-made amate/cotton paper; stitched with silk floss.
20" x 46"